

A mid-year update for The Lord Leonard and Lady Estelle Wolfson Foundation

House to Home: Empowering people with a learning disability to live independently

I am pleased to provide The Lord Leonard and Lady Estelle Wolfson Foundation with a mid-year update on the amazing impact that your support will have on the lives of eight people with a learning disability living in Hucknall.

A reminder of the work we are doing

At Mencap, we believe that you cannot lead a fulfilling life without a home that is safe and supports your every need. Therefore, an important part of our work is empowering people with a learning disability to move out of accommodation that is unsafe, unsustainable and inappropriate, into a house that they can call home.

In Hucknall, we identified eight local people with a learning disability who were stuck in inappropriate accommodation, for instance with elderly carers who were struggling to cope, or care homes not suited to their needs or wants.

For example, **CG** has been, until now, unable to find a home that allowed him to fully use his motorised wheelchair. No space allowed for the turning circles needed for him to fully manoeuvre his wheelchair. This stripped, **CG** of his independence. Additionally, **DJ**'s parents were struggling to meet his needs in their own home. Along with his complex health needs, **DJ** has poor eyesight and frequently feels anxious about using the stairs in his parent's home. Consequently, **DJ**'s parents have had to supervise him using the stairs to prevent him from falling, again taking away his independence in his own home.

All eight of the individuals, including **CG** and **DJ**, wanted to remain in their community in Hucknall, where they were already accessing support, knew the area and had friends and family, they just desperately needed accommodation that suited them.

In response to this need, Mencap and our sister charity, Golden Lane Housing, identified a plot of land at **56, Annesley Road**, whereby we could build two purpose-built bungalows that would provide incredible homes for these eight individuals, as well as for generations of people with a learning disability in the community for years to come.

With the support of The Lord Leonard and Lady Estelle Wolfson Foundation we have been able to start the construction of the two bungalows, and I am delighted to now give you an overview on the progress achieved over the last few months.

Our progress so far

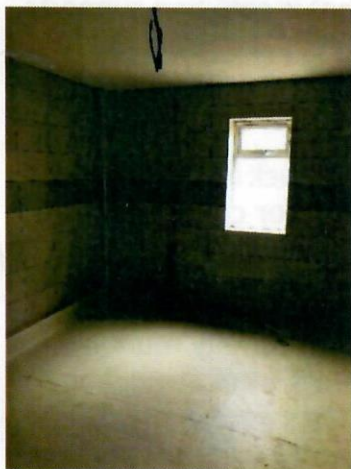
The construction of both properties has now begun. The first bungalow, where we began construction, is now fully equipped with plumbing, heating and electric, as well as non-slip flooring.

Following this progress, we are beginning to make the vital adaptations to the first bungalow to ensure that it is suitable for its tenants. For instance, accessible and user-friendly bathrooms and wetrooms, including Clos-o-mat toilets, which help to maintain the dignity and cleanliness of users, are now being installed. The specialist auto-entrance front screen, which means that the front door will be linked to a secure automatic opening system which will facilitate easy wheelchair access to the property, is currently being worked on in the ironmonger's joinery. This wheelchair access also means that the property will be 'future-proofed', able to accommodate the evolving needs of other tenants, as they grow older and may need to use wheelchairs in time.



These adaptations are designed to increase tenant's independence, enabling and empowering them to live as independently as possible in their own home.

The second bungalow's construction timeline is slightly behind the first bungalow. This intentional staggering of construction start dates allows for easier and more effective project management. The 'superstructure' of the second property is now in place, and we are currently working to install heating, plumbing and electricity to the bungalow.



External works and drainage for both properties are also ongoing. The outside areas have been largely stripped of foliage to allow for this drainage work. When completed, the gardens will be landscaped, to provide a peaceful and sensory setting for all the tenants to enjoy.

Once all the work is complete, ceiling track hoists, furniture and other vital adaptations, such as thumb turn locks for those tenants with limited dexterity will be added to the bungalows. Importantly, the tenants will be consulted about key decisions, such as how the bungalows should be decorated. This is a unique opportunity for tenants to be able to choose what they would like in their new home. This is an incredibly important part of the process, and will ensure that the tenants feel happy and comfortable when they move in.

The estimated completion date for both properties is January 2020. After which, the eight tenants, including **CG** and **DJ**, will be able to move into their fully adapted home, in the community that they all know and love.

Thank you

Without The Lord Leonard and Lady Estelle Wolfson Foundation, we would not have been able to fund the vital property adaptations required to make these bungalows suitable and supportive for the people with a learning disability living that needed them. By providing a true home for the eight tenants, you are not just helping us to meet their needs, but empowering them to live a fulfilled and independent life and continue to enjoy the community that they know and love.

I look forward to fully updating you in the New Year when the bungalows are completed, but for now, please do not hesitate to contact me if you have any questions.



Lucy Rex-Hawkes | Philanthropy Fundraising Manager | 07971 754246 | Lucy.Rex-Hawkes@mencap.org.uk